



AVC-ELN81FT/2.8 AI

NDA
A COMPLIANT | CE | FC

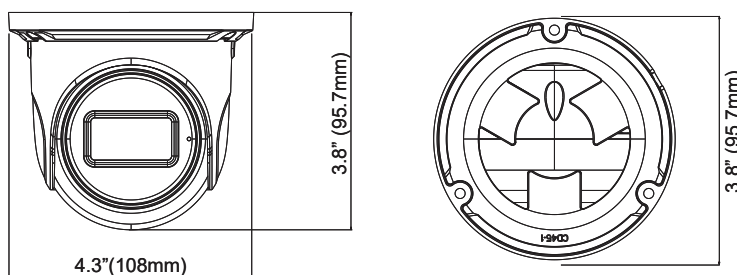
8MP H.265 IR WATER-PROOF TURRET NETWORK CAMERA

OVERVIEW

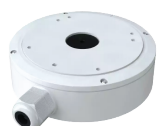
- H.265 /H.264/MJPEG coding
- Max resolution: 8MP (3840 x 2160)
- ICR Auto Switch, True day / Night Vision
- 3D DNR, WDR, HLC, BLC, Smart IR, etc.
- Up to 100ft IR Night View Distance
- Built-in micro SD card slot with video and still image capture function (up to 256GB)
- 1CH built-in MIC; 1CH audio input
- DC12V/PoE power supply
- IP 67 ingress protection
- Support three streams
- Support remote monitoring by smart phones & tablet PCs with iOS and Android OS
- Intelligent analytics
- NDA A Compliant

DIMENSIONS

Unit : inch(mm)



OPTIONAL ACCESSORIES



AVM-EDMTS-W-TL1



AVM-EWMTS-W-TL1

SPECIFICATIONS

CAMERA					
Image Sensor	1/3" Progressive Scan CMOS				
Image Size	3840 x 2160				
Electronic Shutter	1/2s to 1/100,000s				
Iris Type	Fixed Iris				
Min. Illumination	Color: 0.005 lux @ F1.6(AGC ON); BW: 0 lux with IR				
IR Distance	Up to 98ft				
Lens	Fixed 2.8 @ F1.6 Horizontal FoV: 94° Vertical FoV: 50° Diagonal FoV: 115°				
Focus	Fixed				
Lens Mount	M12				
Days & Night	ICR				
Wide Dynamic Range	120 dB				
Digital NR	Yes				
Backlight Compensation (BLC)	Yes				
Highlight Compensation (HLC)	Yes				
Angle Adjustment	Pan: 0°~360°; Tilt:0°~90°;Rotation: 0°~360°				
VIDEO IMAGE					
Video Compression	Main stream: H.265 / H.264 Sub/third stream: H.265 / H.264 / MJPEG				
H.265 Compression Standard	Main Profile@Leve4.1 High Tier				
Resolution	8MP (3840×2160), 6MP (3072×2048), 5MP (2592×1944), 4MP (2560 × 1440), 3MP (2304 × 1296), 1080P (1920 × 1080), 720P (1280 × 720), D1, 480 × 240, CIF				
Main Stream	60Hz: 8MP/6MP/5MP/4MP/2K/3MP/1080P/720P (1~30fps); 50Hz: 8MP/6MP/5MP/4MP/2K/3MP/1080P/720P (1~25fps); HFR mode: 1080P/720P (60Hz: 1~60fps; 50Hz: 1~50fps)				
Sub Stream	60Hz: 720P/D1/CIF/VGA/480x240 (1~30fps); 50Hz: 720P/D1/CIF/VGA/480x240 (1~25fps)				
Third Stream	60Hz: 720P/D1/480x240/CIF (1~30fps); 50Hz: 720P/D1/480x240/CIF (1~25fps)				
Video Bit Rate	64 Kbps ~ 12 Mbps (CBR / VBR Adjustable)				
Image Settings	ROI, Saturation, Brightness, Hue, Contrast, Wide Dynamic, Sharpness, Image Mirror, Image Flip, NR, etc. adjustable through client software or web browser				
ROI	Each ROI to be configured separately				
NETWORK / INTERFACE					
Network	1 x RJ45 10M / 100M Self-Adaption				
Network Protocol	UDP, IPv4, IPv6, DHCP, NTP, RTSP, RTP, RTCP, PPPoE, DDNS, SMTP, FTP, 802.1x, SNMP, UPnP, HTTP, HTTPS, QoS				
Interface Protocol	ONVIF				
Web Browser	IE (Plug-in required) / Google Chrome / Edge / Firefox / Safari				
Online Connection	Support simultaneous monitoring for up to 3 users; Support multi-stream real time transmission				
Storage	Micro SD/SDHC/SDXC Slot (up to 256GB) with video and still image capture function				
Video Output	No				
Audio	1CH audio input; 1CH built-in MIC				
Alarm	N/A				
Hardware Reset	YES				
DORI DISTANCE					
Lens	Detect	Observe	Recognize	Identify	
2.8mm	202.62ft(61.76m)	81.03ft(24.70m)	40.51ft(12.35m)	20.27ft(6.18m)	
FUNCTIONS					
Remote Monitoring	Web Browser Interface, Mobile App, AVYCON CVMS 2.0				
Smart Alarm	Motion detection, SD card full, SD card error				
Smart Analytics	Video Exception (scene change, video blurr and video cast detection), line crossing detection and region intrusion detection				
General Function	Watermark, IP address filtering, video mask, heartbeat, illegal login lock, corridor pattern				
GENERAL					
Power Supply	DC12V/PoE				
Power Consumption	< 5W				
Operating Environment	- 30 °C ~ 60 °C (-22°F~140°F);Humidity: less than 95 % (non-condensing)				
Storage Environment	- 30 °C ~ 65°C (-22°F~149°F), Humidity: less than 95 % (non-condensing)				
Dimensions (in)	Ø 3.76 × 4.25				
Weight (lb)	Approx. 1.01 lbs				
Ingress Protection	IP 67				
Certificate	CE, FCC				
Installation	Ceiling mounting (Wall mounting available with the junction box and bracket)				
Environmental Protection	Complies with Directive EU RoHS, WEEE(2012/19/EU) , directive 94/62/EC and REACH(EC1907/2006) 95.7				